



REPAIR GUIDELINE

RG 2015-002

10/23/2015

Repair Description:

Replace BP54000/BP55000 with PA54000 for repairs ***IMPORTANT***

Tools Required:

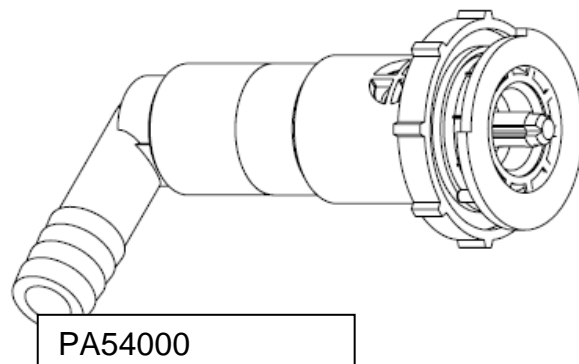
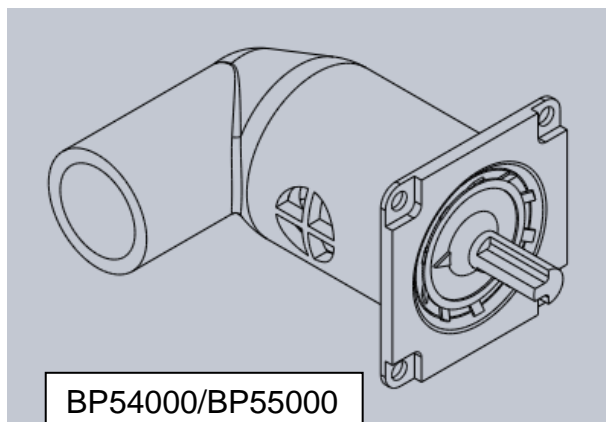
- 1) #2 Philips head screwdriver or Drill
- 2) Small, flat head screwdriver
- 3) Dremel Tool or 1/4" round file
- 4) Caulking Gun
- 5) Silicone Caulking
- 6) Clean Up Towel
- 7) PVC Cement

Step List:

- 1) Remove Trim Rings
- 2) Remove Knobs & Air Switch
- 3) Remove Panel Bezel
- 4) Remove Existing Valves
- 5) Modify Mounting Holes
- 6) Attach and Seal New Valves
- 7) Reattach Bezel
- 8) Reattach Knobs, Air Button, and Trim
- 9) Attach Barbed Elbows and Air Lines

This new item must be retrofitted to your existing unit. The item cannot be replaced from the topside of the control panel, but must be accessed from the underside of the panel. The internal parts are not interchangeable nor compatible.

Approximate time: 30 - 45 minutes



The copying, distribution and utilization of this document as well as the communication of its contents to others without expressed authorization is prohibited. Offenders will be held liable for the payment of damages. All rights reserved in the event of the grant of a patent, utility model or ornamental design registration.

File:	Distribution:	Originator: M. Baker
		Project Eng: M. Baker
		Eng. Dept: M. Dominguez



REPAIR GUIDELINE

RG 2015-002

10/23/2015

Step 1: Remove Trim Rings



The copying, distribution and utilization of this document as well as the communication of its contents to others without expressed authorization is prohibited. Offenders will be held liable for the payment of damages. All rights reserved in the event of the grant of a patent, utility model or ornamental design registration.

File:

Distribution:

Originator: M. Baker

Project Eng: M. Baker

Eng. Dept: M.Dominguez

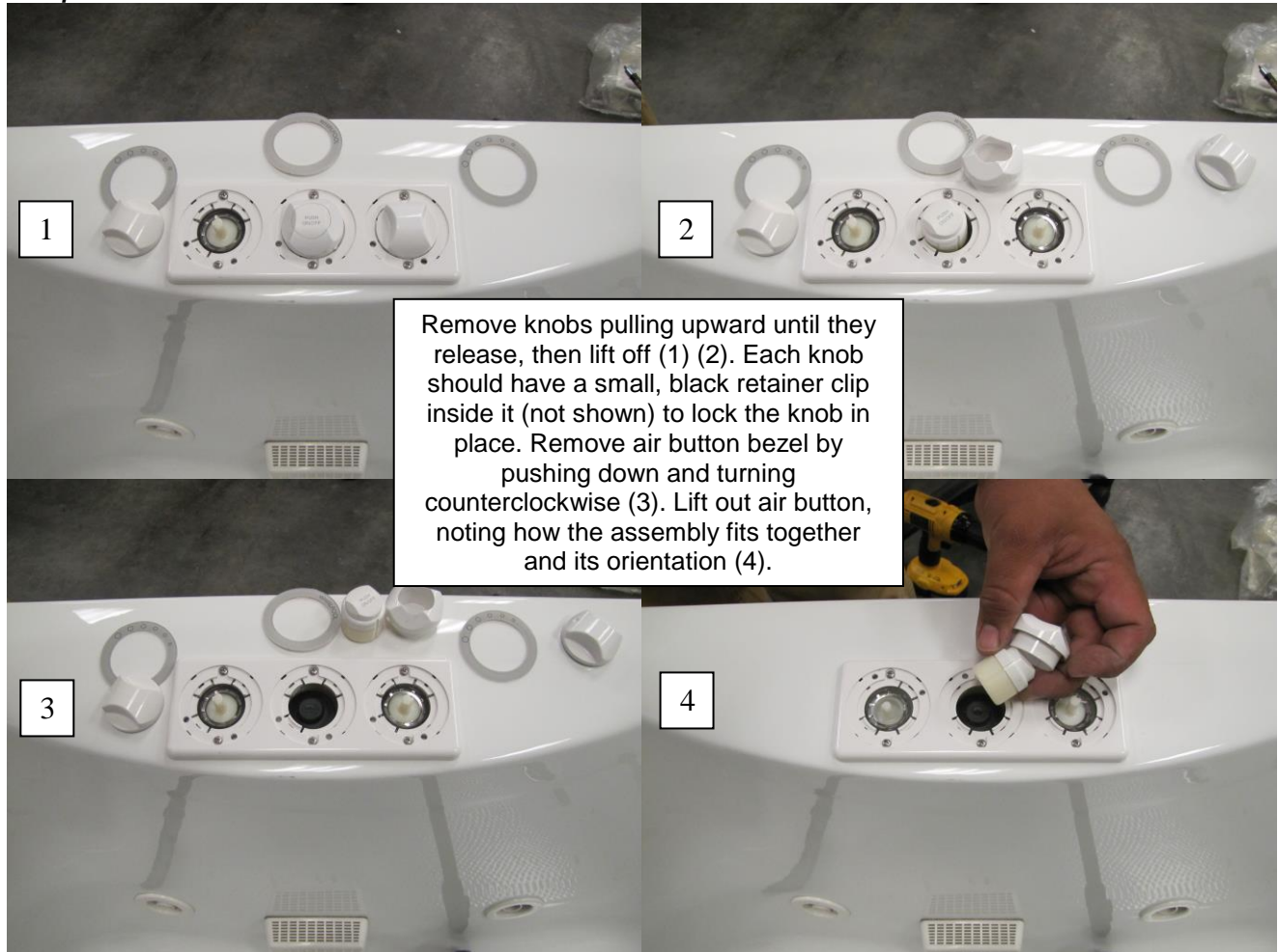


REPAIR GUIDELINE

RG 2015-002

10/23/2015

Step 2: Remove Knobs & Air Switch



The copying, distribution and utilization of this document as well as the communication of its contents to others without expressed authorization is prohibited. Offenders will be held liable for the payment of damages. All rights reserved in the event of the grant of a patent, utility model or ornamental design registration.

File:	Distribution:	Originator: M. Baker
		Project Eng: M. Baker
		Eng. Dept: M.Dominguez

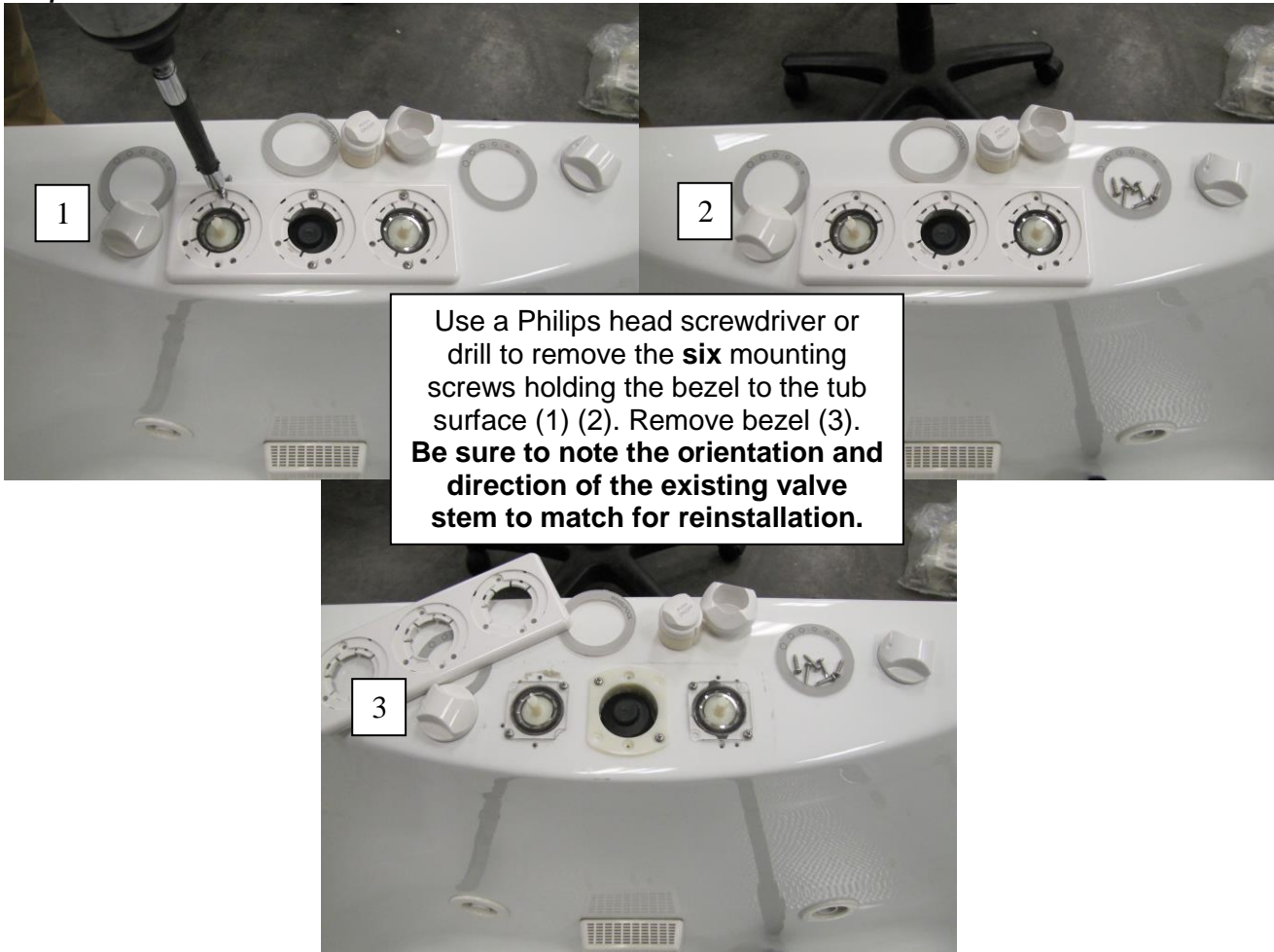


REPAIR GUIDELINE

RG 2015-002

10/23/2015

Step 3: Remove Panel Bezel



Use a Philips head screwdriver or drill to remove the **six** mounting screws holding the bezel to the tub surface (1) (2). Remove bezel (3). **Be sure to note the orientation and direction of the existing valve stem to match for reinstallation.**

The copying, distribution and utilization of this document as well as the communication of its contents to others without expressed authorization is prohibited. Offenders will be held liable for the payment of damages. All rights reserved in the event of the grant of a patent, utility model or ornamental design registration.

File:	Distribution:	Originator: M. Baker
		Project Eng: M. Baker
		Eng. Dept: M.Dominguez

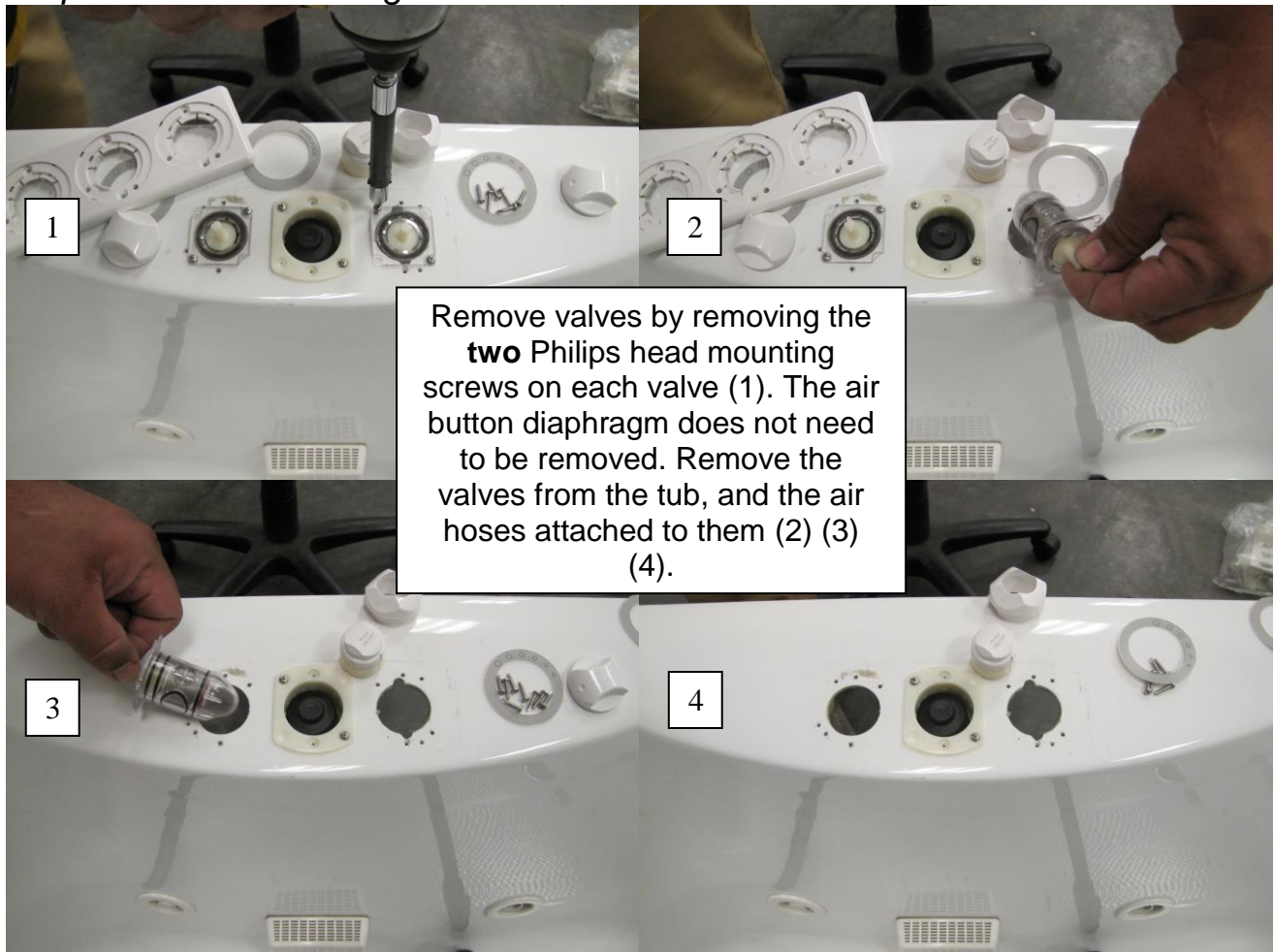


REPAIR GUIDELINE

RG 2015-002

10/23/2015

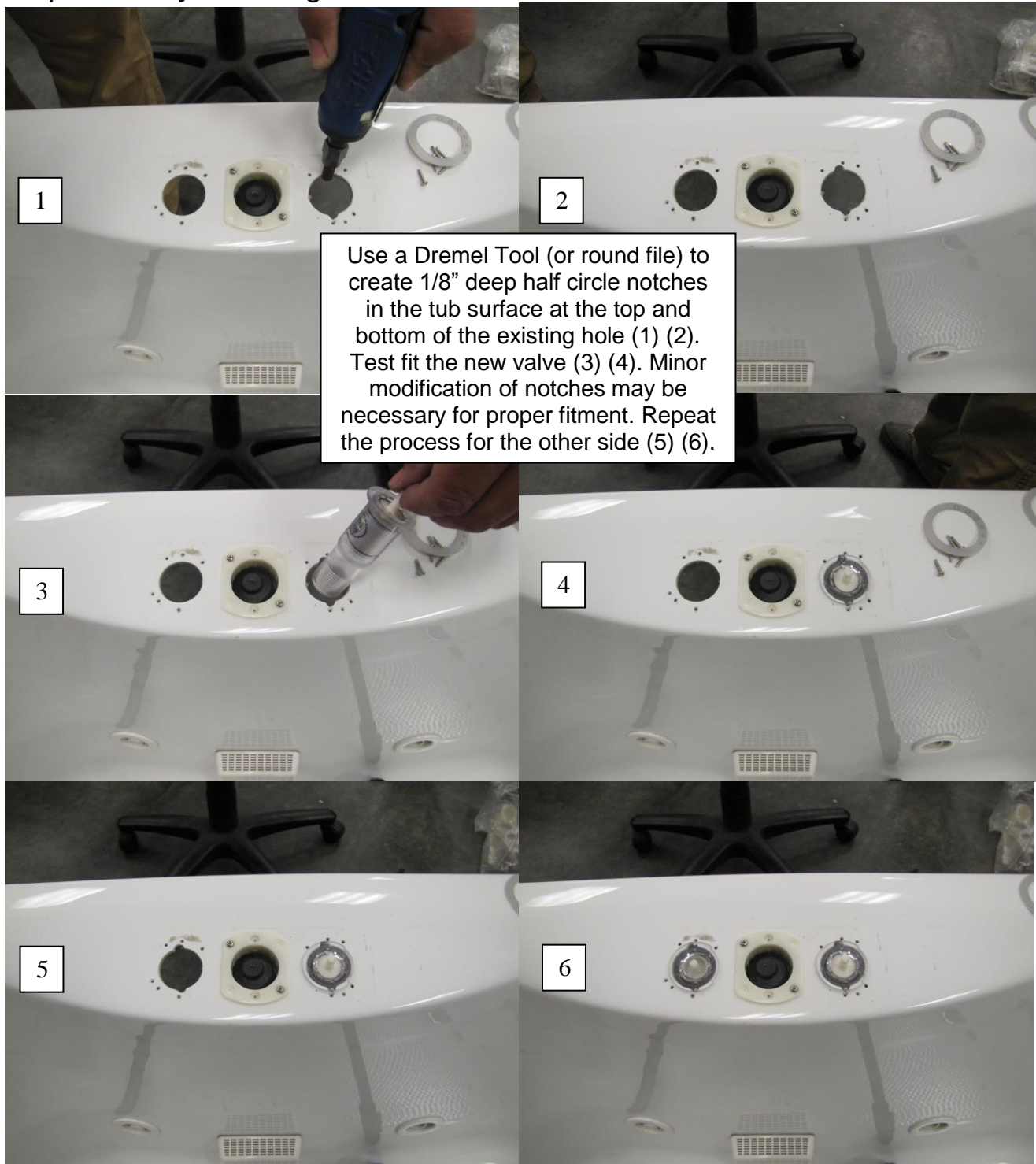
Step 4: Remove Existing Valves



The copying, distribution and utilization of this document as well as the communication of its contents to others without expressed authorization is prohibited. Offenders will be held liable for the payment of damages. All rights reserved in the event of the grant of a patent, utility model or ornamental design registration.

File:	Distribution:	Originator: M. Baker
		Project Eng: M. Baker
		Eng. Dept: M.Dominguez

Step 5: Modify Mounting Holes



Use a Dremel Tool (or round file) to create 1/8" deep half circle notches in the tub surface at the top and bottom of the existing hole (1) (2). Test fit the new valve (3) (4). Minor modification of notches may be necessary for proper fitment. Repeat the process for the other side (5) (6).

The copying, distribution and utilization of this document as well as the communication of its contents to others without expressed authorization is prohibited. Offenders will be held liable for the payment of damages. All rights reserved in the event of the grant of a patent, utility model or ornamental design registration.

File:	Distribution:	Originator: M. Baker
		Project Eng: M. Baker
		Eng. Dept: M.Dominguez

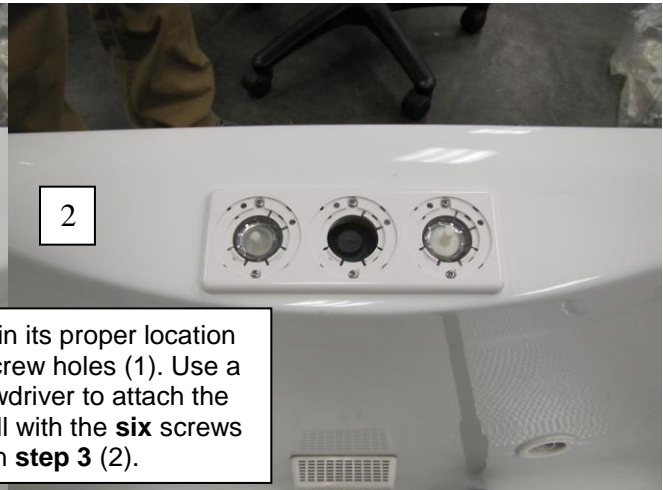
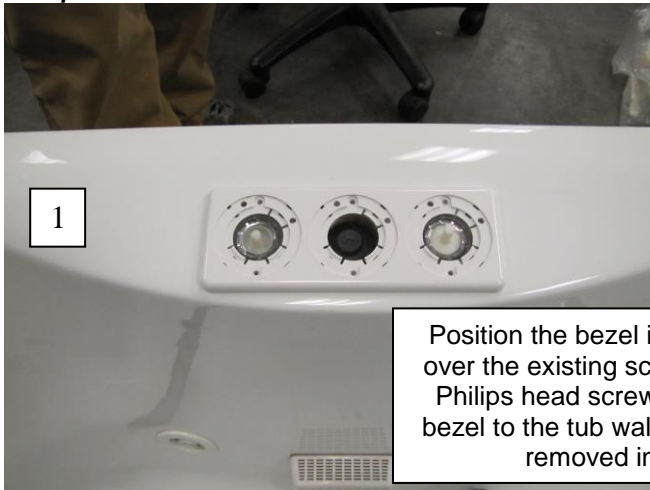
Step 6: Attach and Seal New Valves



Apply a bead of silicone around the base of the new valve. Push and seal into place. Clean up excess.
****NOTE****
The new valves do not use mounting screws; the retainer nut (2) will hold them in place.

From the underside of the tub wall, screw the retainer nut on to both valves. Tighten until snug. Clean up any excess silicone (top & bottom).

Step 7: Reattach Bezel



Position the bezel in its proper location over the existing screw holes (1). Use a Philips head screwdriver to attach the bezel to the tub wall with the **six** screws removed in **step 3** (2).

The copying, distribution and utilization of this document as well as the communication of its contents to others without expressed authorization is prohibited. Offenders will be held liable for the payment of damages. All rights reserved in the event of the grant of a patent, utility model or ornamental design registration.

File:	Distribution:	Originator: M. Baker
		Project Eng: M. Baker
		Eng. Dept: M.Dominguez

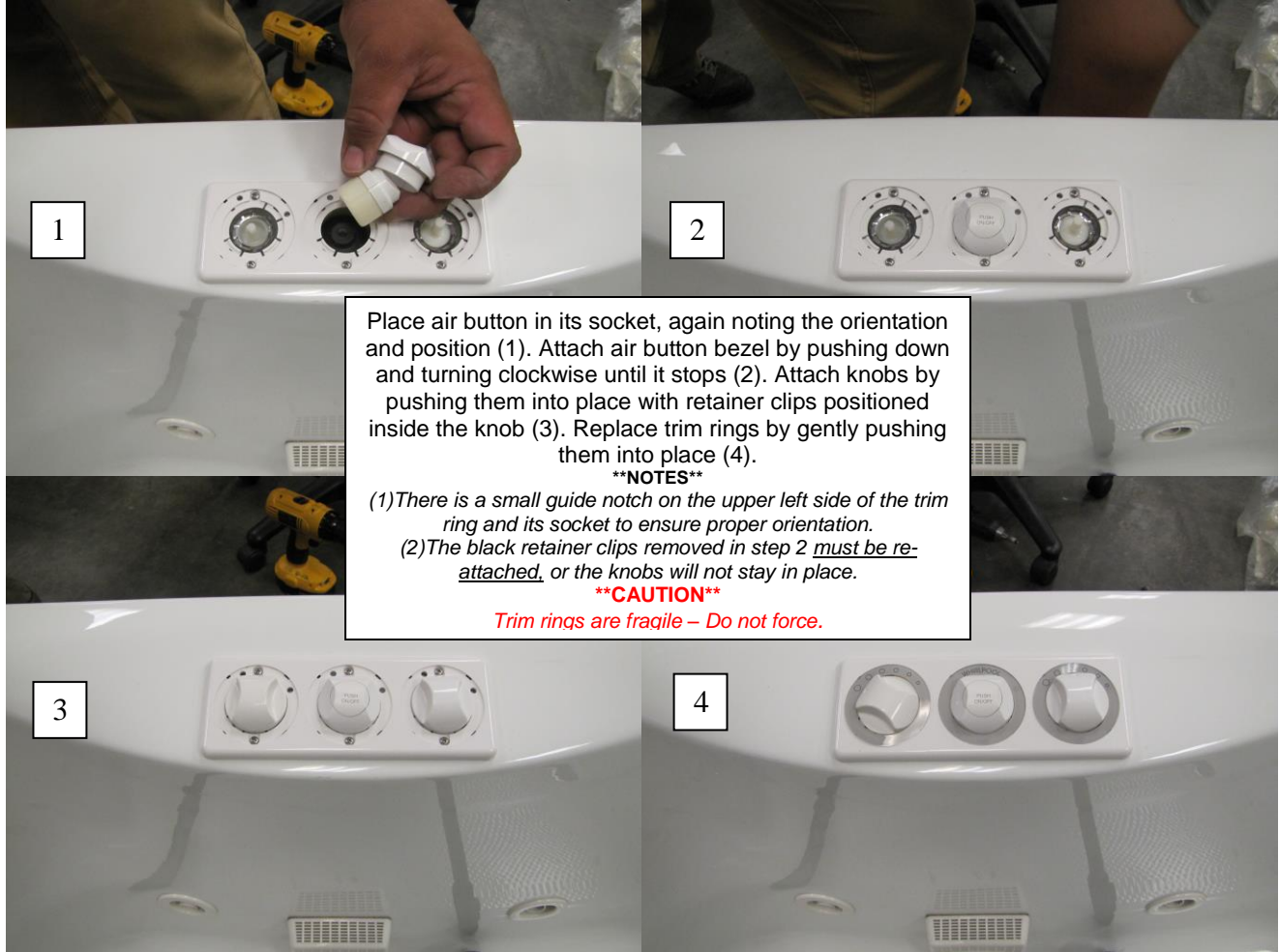


REPAIR GUIDELINE

RG 2015-002

10/23/2015

Step 8: Reattach Knobs, Air Button, and Trim



The copying, distribution and utilization of this document as well as the communication of its contents to others without expressed authorization is prohibited. Offenders will be held liable for the payment of damages. All rights reserved in the event of the grant of a patent, utility model or ornamental design registration.

File:	Distribution:	Originator: M. Baker
		Project Eng: M. Baker
		Eng. Dept: M. Dominguez



REPAIR GUIDELINE

RG 2015-002

10/23/2015

Step 9: Attach Barbed Elbows

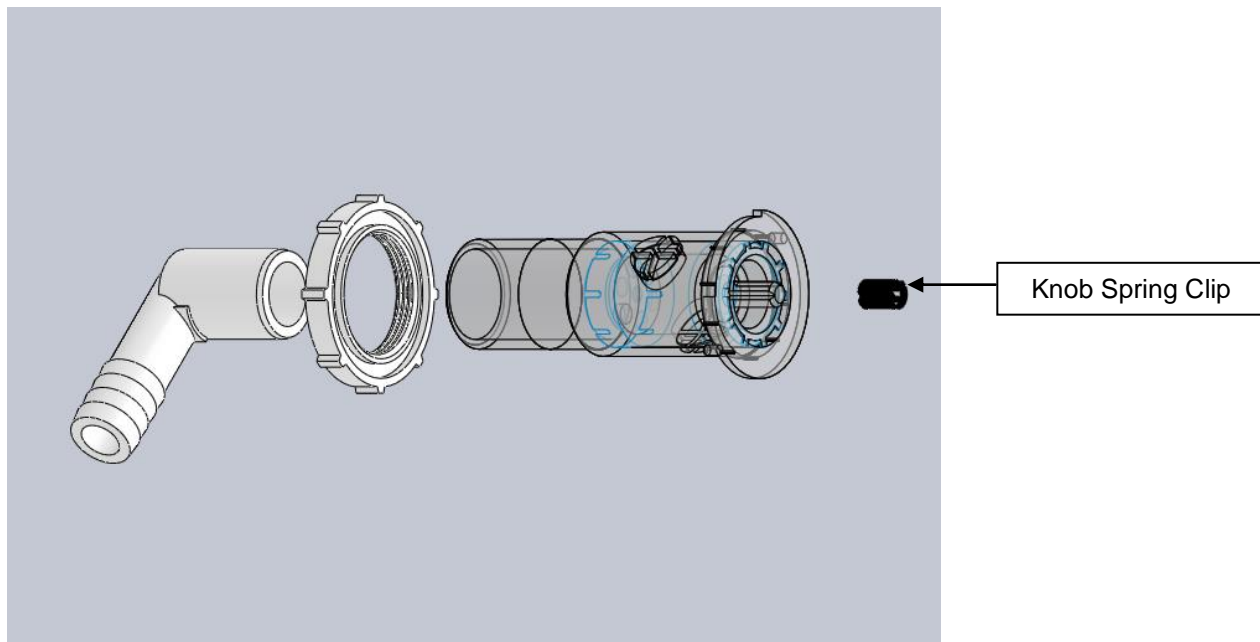
Please read
Below:



Or

Don't Glue Barb fitting if you have PVC Flex Pipe.
You can Glue Flex Pipe into Air control Housing.

PA54000 Exploded View



The copying, distribution and utilization of this document as well as the communication of its contents to others without expressed authorization is prohibited. Offenders will be held liable for the payment of damages. All rights reserved in the event of the grant of a patent, utility model or ornamental design registration.

File:	Distribution:	Originator: M. Baker
		Project Eng: M. Baker
		Eng. Dept: M.Dominguez