

# ROTOR WIND 5EF

36 TRAY ELECTRIC ROTATING BAKING OVEN (WIDE VERSION)  
5RW0700



## Main Features

The Air Flow crosses a Group of armor plated Heating Elements laid out in order to ensure an Optimal Performance of the Oven.

- 36 Tray Capacity (400 x 600)
- High Production
- Steam Exhaust Fan
- Front surface and Baking Chamber Completely in Stainless steel.
- Extractable trolley for which makes it easier to use
- Electromechanical Control Panel which enables the control of:
  - (a) Temperature
  - (b) Ventilation
  - (c) Rack Rotation
  - (d) Supply of Steam
  - (e) Baking Timers
  - (f) shut down/start ups
  - (f) Lighting control
- New steam generator embraced in the ventilation area ensures steam is spread inside the chamber in a very homogenous way through the ventilation system.



## SPECIFICATIONS

Voltage	400 V 3 Phase
Power	47 kw
Weight	1380 kg
Plug Supplied	No
Capacity	15/18 Trays x (800 x 600) or 30/36 x (400 x 600)
Thermostat	300°C
Baking Volume	8.6 m <sup>2</sup>
Warranty	4 Year Warranty (2 yr Labour 4 yr Parts)

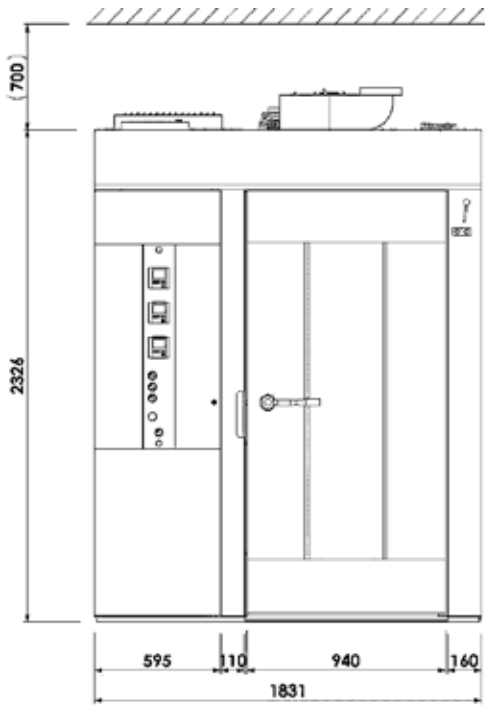
## ACCESSORIES

Trolleys 15 Tray (600 x 800)	Computerized Panel
Trolleys 30 Trays (400 x 600)	Variable Speed System for Exhaust
Trolleys 18 Tray (600 x 800)	Turn Table Rotation Option as
Trolleys 36 Trays (400 x 600)	opposed to Standard Hooking system.

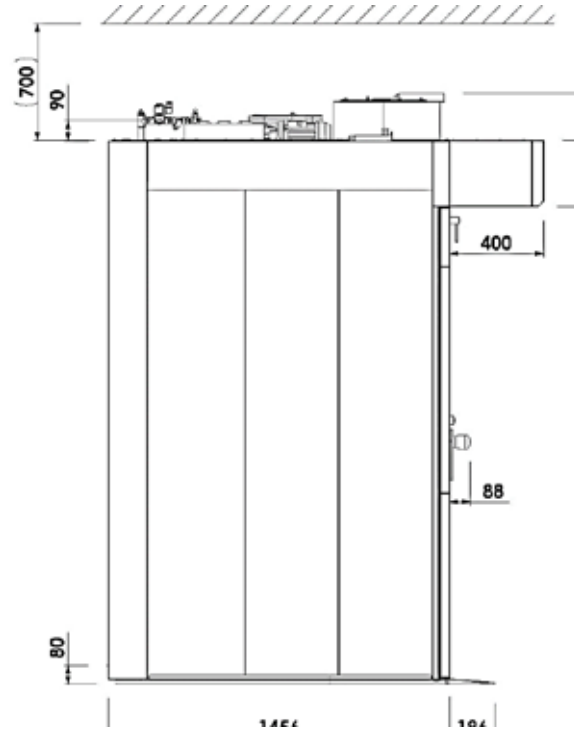
## DIMENSIONS

External Width	1840mm
External Depth	1850mm
External Height	2700mm

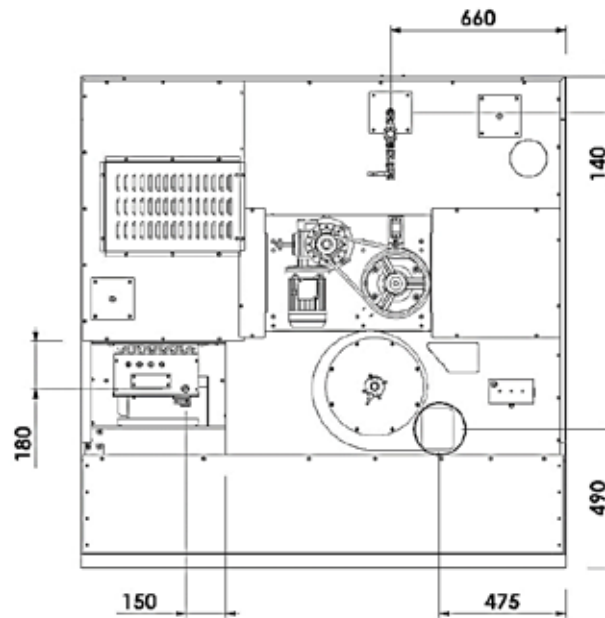
# FRONT



# SIDE



# TOP



We reserve the right to alter specifications without notice.



**THE  
GOOD  
LADY**

Phone: 1800 183 818 Email: [support@thegoodlady.com.au](mailto:support@thegoodlady.com.au)  
Website: [www.thegoodlady.com.au](http://www.thegoodlady.com.au)