

The **ALN OPTIONAL VENA CAVA FILTERS**
& The ALN Removal and/or Repositioning Kits



Aln
implants chirurgicaux

ADVANCING HIGH TECHNOLOGY FOR LIFE

The **ALN**
Optional
Vena Cava Filters





THE ALN
OPTIONAL VENA CAVA FILTERS

**Permanent
and/or temporary
intended to be
retrievable at any time***



**Easy to
implant**

**Unique
design**

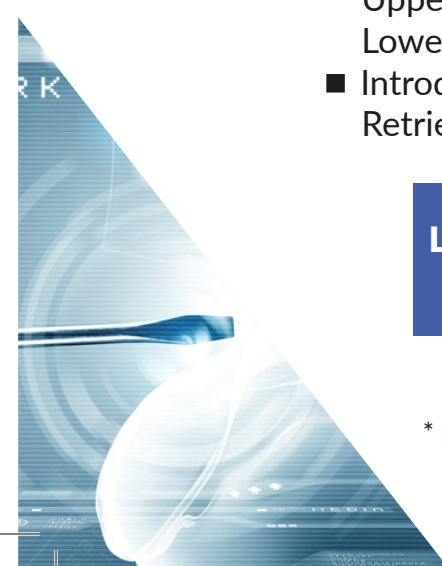
**Excellent
corrosion
resistance**

Upper level for anchoring
Lower level for centering

- Different length of the legs to minimize the risk of legs interlacing
- Legs are at two different levels:
Upper level for anchoring (6 shorter legs)
Lower level for centering (3 longer legs)
- Introducer sheath= low profile 7F
Retrieval sheath= low profile 9F

**Legs' configuration minimizes
the risk of cava penetration**

* please refer to our local distributor for retrieval approved limit



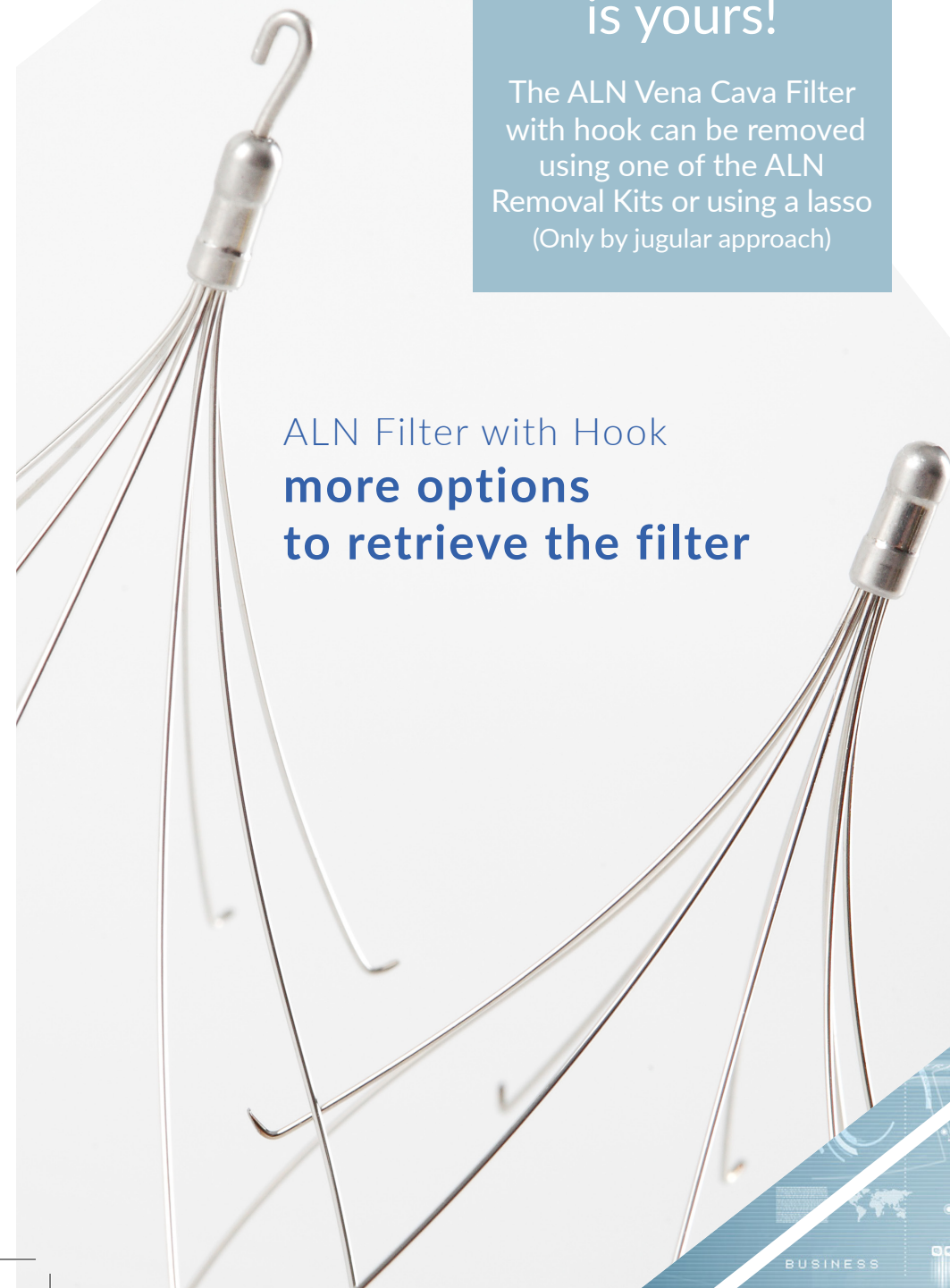
The only retrievable IVC filters

- manufactured in stainless steel
no welding points
- approved with an indicated IVC diameter up to 32 mm
(CE Mark)

The choice
is yours!

The ALN Vena Cava Filter
with hook can be removed
using one of the ALN
Removal Kits or using a lasso
(Only by jugular approach)

ALN Filter with Hook
**more options
to retrieve the filter**





THE ALN OPTIONAL
VENA CAVA FILTERS
4 Approaches



Femoral
&
Popliteal

3T MRI
compatible



Jugular
&
Brachial

THE ALN VENA CAVA FILTERS

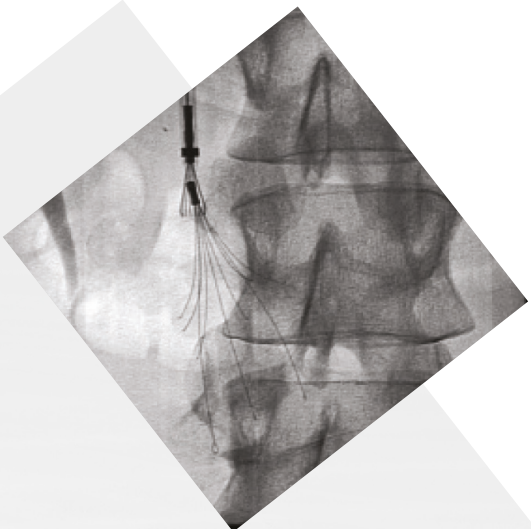
Removal and/or Repositioning Kits

Unique 2 in 1 RS

ALN vena cava removal and/or repositioning kits
Only by jugular approach



Pincer specially designed to catch the apex of the filter

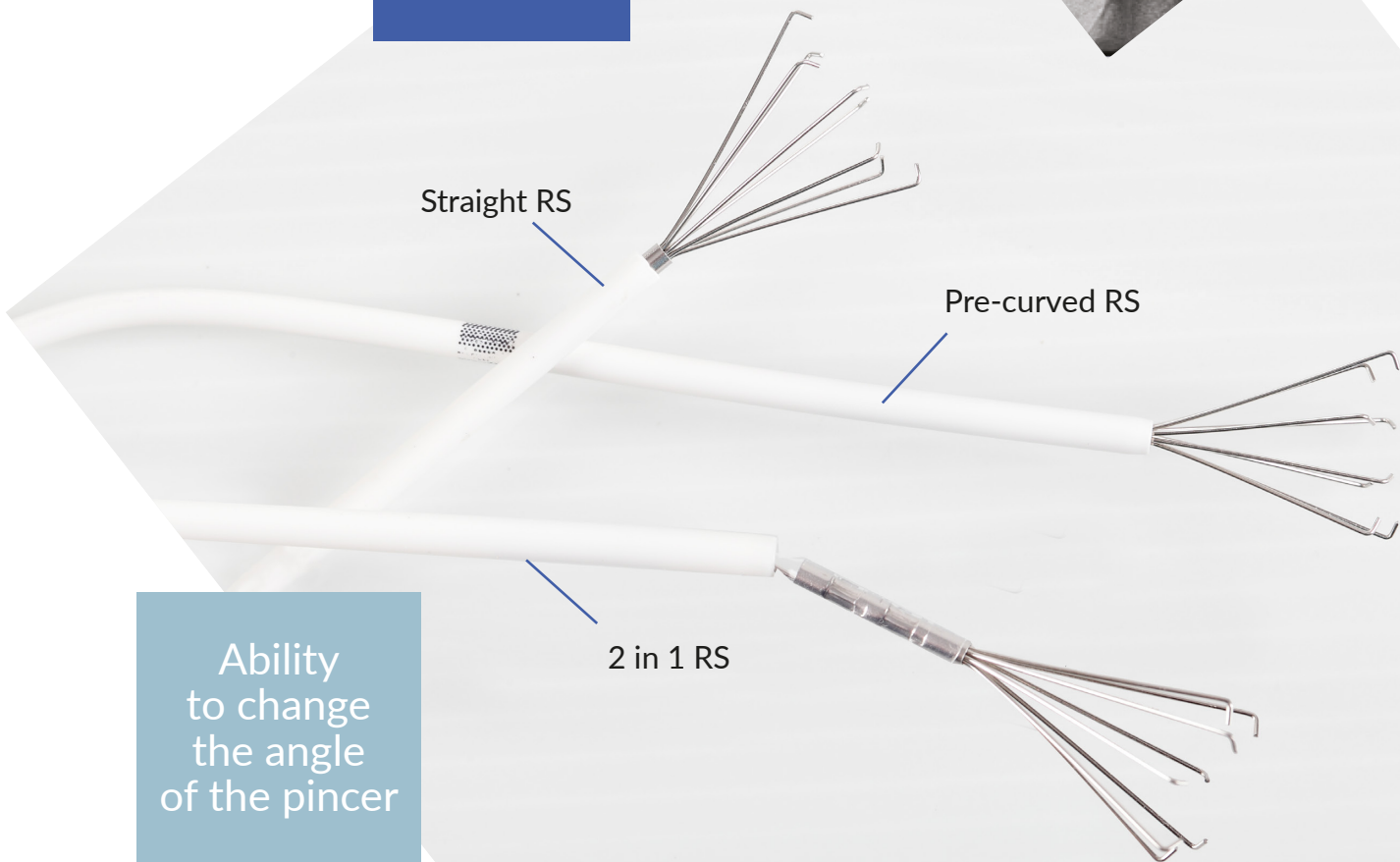


Straight RS

Pre-curved RS

2 in 1 RS

Ability to change the angle of the pincer



The ALN OATF

Optional Vena Cava Filter

*Just like the original,
talented and reliable*

NEW



OATF

The ALN OATF Optional Vena Cava Filter with and without hook

Based on the expertise
and experience of ALN

- The only optional IVC Filter in Stainless steel without welding points: 3T MRI Compatible
- 4 approaches
- The only Optional IVC Filter approved to be implanted in patient whose vena cava diameter is less than or equal to 32 mm
- Enhanced stability with its 3 anti-tilting legs

3

anti-tilting

6
legs
anchoring
legs

3

centering
legs

Optimal Design

- A design with a unique technology:
 - Anti-tilting legs for an optimum centering
 - Anchoring legs with an anti-transfixion loop to minimize the risk of cava penetration
 - Centering legs
- The ALN OATF optional IVC Filter with hook can be removed with one of our three extraction kits and/or a lasso

THE ALN OATF
OPTIONAL
VENA CAVA FILTER

4 Approches



Femoral
&
Popliteal

3T MRI
compatible



Jugular
&
Brachial



CLINICAL STUDIES

JVIR 10/2012

The mean interval between implantation and retrieval was 25.6 months (range, 14.8- - 40.8 months), and extractions were performed on eight patients who had received a filter at least 2 years earlier. The longest dwell time was 40 months. All filters were extracted successfully without complications.

Conclusions: Optional ALN filter retrievals can be performed safely after more than 1 year following implantation.

“Successful retrieval of 29 ALN Inferior Vena Cava Filters of 25.6 Months after placement.”

Olivier Pellerin, MD – Massimiliano di Primio, MD – Olivier Sanchez, MD, PhD – Guy Meyer, MD, PhD and Marc Sapoval, MD, PhD

CHEST January 2007; 131:223-229

The largest prospective study which proves the safety and the possibility to retrieve the filter after a long period of implantation (Chest Publication)

“A Prospective Long - term Study of 220 Patients with a retrievable Vena Cava Filter for Secondary Prevention of Venous Thromboembolism”

Patrick Mismetti, MD, PhD ; Karine Rivron-Guillot, MD ; Sara Quenet, MS ; Hervé Décousus, MD ; Sylvie Laporte, MS, PhD ; Magali Epinat, MD ; and Fabrice Guy Barral, MD

Cardiovasc Intervent Radiol 2008 May 21

Intended to be retrieved at any time (CVIR publication – Reported case 722 days) + High successful retrieval rate (96%)

Conclusion: These results provide information on the safety of ALN filter retrieval after extended implantation times. The failure rate of filter retrieval was low and we did not observe significant complications during the period of filtration.....

“Early and Late Retrieval of the ALN Removable Vena Cava Filter: Results from a Multicenter Study”

Pellerin O, Barral FG, Lions C, Novelli L, Beregi JP, Sapoval M



For all studies please visit
www.aln2b.com

PRODUCT CODES

		Product Code	Maximum diameter of the vena cava (mm)	Length of the filter (mm)	Introducer Sheath	
					French size (ID)	Length (mm)
ALN Vena Cava Filter	Jugular Kit	FJ.120096	32	55	7	600
	Brachial Kit	FB.010500	32	55	7	1200
	Femoral Kit	FF.010995	32	55	7	600
	Popliteal Kit*	FP.012013	32	55	7	1200
ALN Vena Cava Filter with Hook	Jugular Kit	FJ.HOOK	32	59	7	600
	Brachial Kit	FB.HOOK	32	59	7	1200
	Femoral Kit	FF.HOOK	32	59	7	600
	Popliteal Kit*	FP.HOOK	32	59	7	1200

The implantation kit includes : the ALN filter in its holder, an introduction system (dilator, introducer sheath, pushing catheter), a puncture needle, a «J» Tip guidewire.

*Popliteal: Not available in the United States

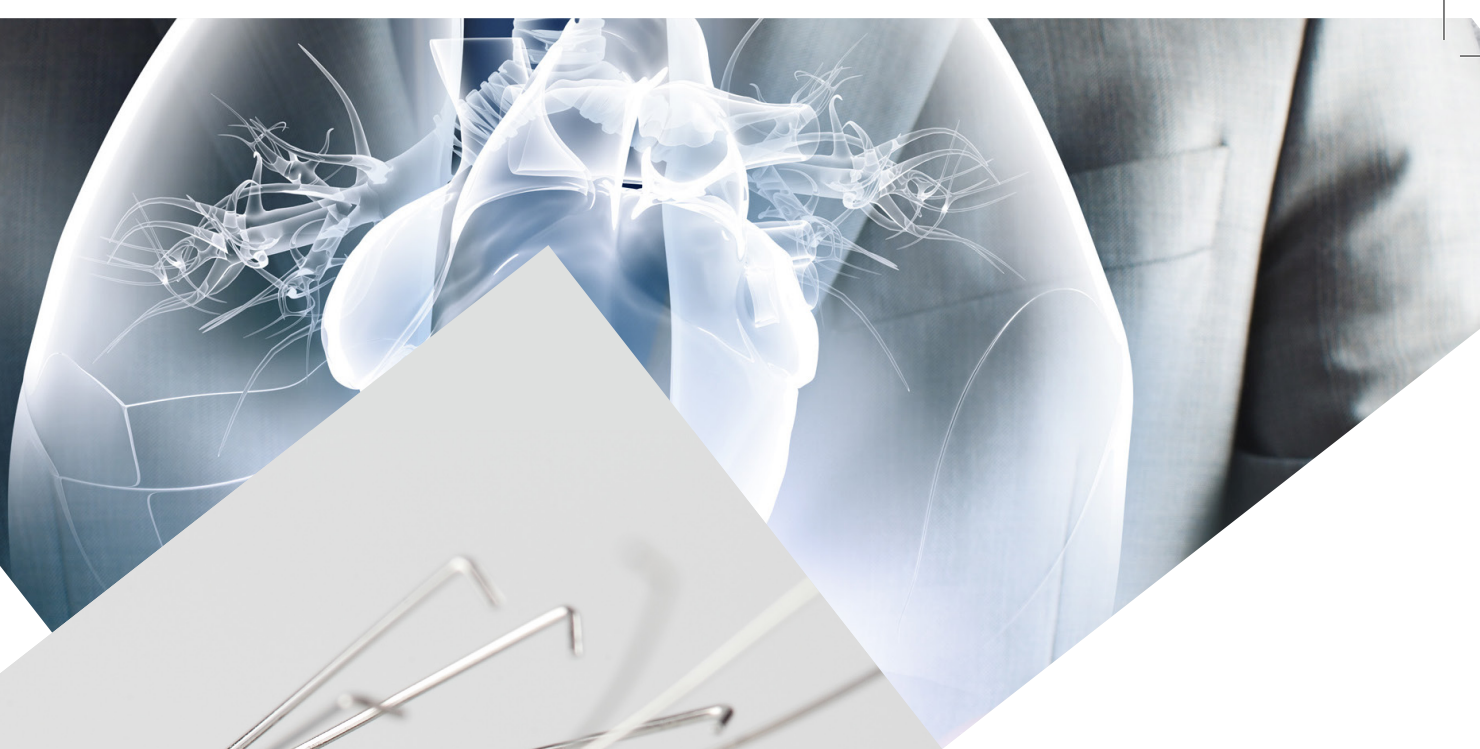
		Product Code	Introducer Sheath	
			French Size (ID)	Length (mm)
ALN Vena Cava Filter Removal and/or Repositioning Kit Only by Jugular approach	ALN Straight RS	FT.902010	9	570
	ALN Pre-Curved RS	FT.902010/VS2	9	570
	ALN 2 in 1 RS	RK-2010	9	610

The removal kit includes : a pincer catheter, an introduction system (dilator and introducer sheath), a puncture needle, a «J» Tip guidewire.

		Product Code	Maximum diameter of the vena cava (mm)	Length of the filter (mm)	Introducer Sheath	
					French size (ID)	Length (mm)
ALN OATF Vena Cava Filter	Jugular Kit	FJ.OATF19	32	55	7	600
	Brachial Kit	FB.OATF19	32	55	7	1200
	Femoral Kit	FF.OATF19	32	55	7	600
	Popliteal Kit	FP.OATF19	32	55	7	1200
ALN OATF Vena Cava Filter with Hook	Jugular Kit	FJH.OATF19	32	59	7	600
	Brachial Kit	FBH.OATF19	32	59	7	1200
	Femoral Kit	FFH.OATF19	32	59	7	600
	Popliteal Kit	FPH. OATF19	32	59	7	1200


The implantation kit includes : the ALN filter in its holder, an introduction system (dilator, introducer sheath, pushing catheter), a puncture needle, a «J» Tip guidewire.

*Popliteal: Not available in the United States



ALN S.A.R.L.

LEGAL MANUFACTURER 
Route de la gare
20240 GHISONACCIA
FRANCE

MANUFACTURING SITE 
589, Chemin du Niel
83230 BORMES LES MIMOSAS
FRANCE

Tel. +33 (0)4 94 01 05 01 
Fax. +33 (0)4 94 01 09 01

contact@aln2b.com 

www.aln2b.com 

 **FDA Cleared**
0297

