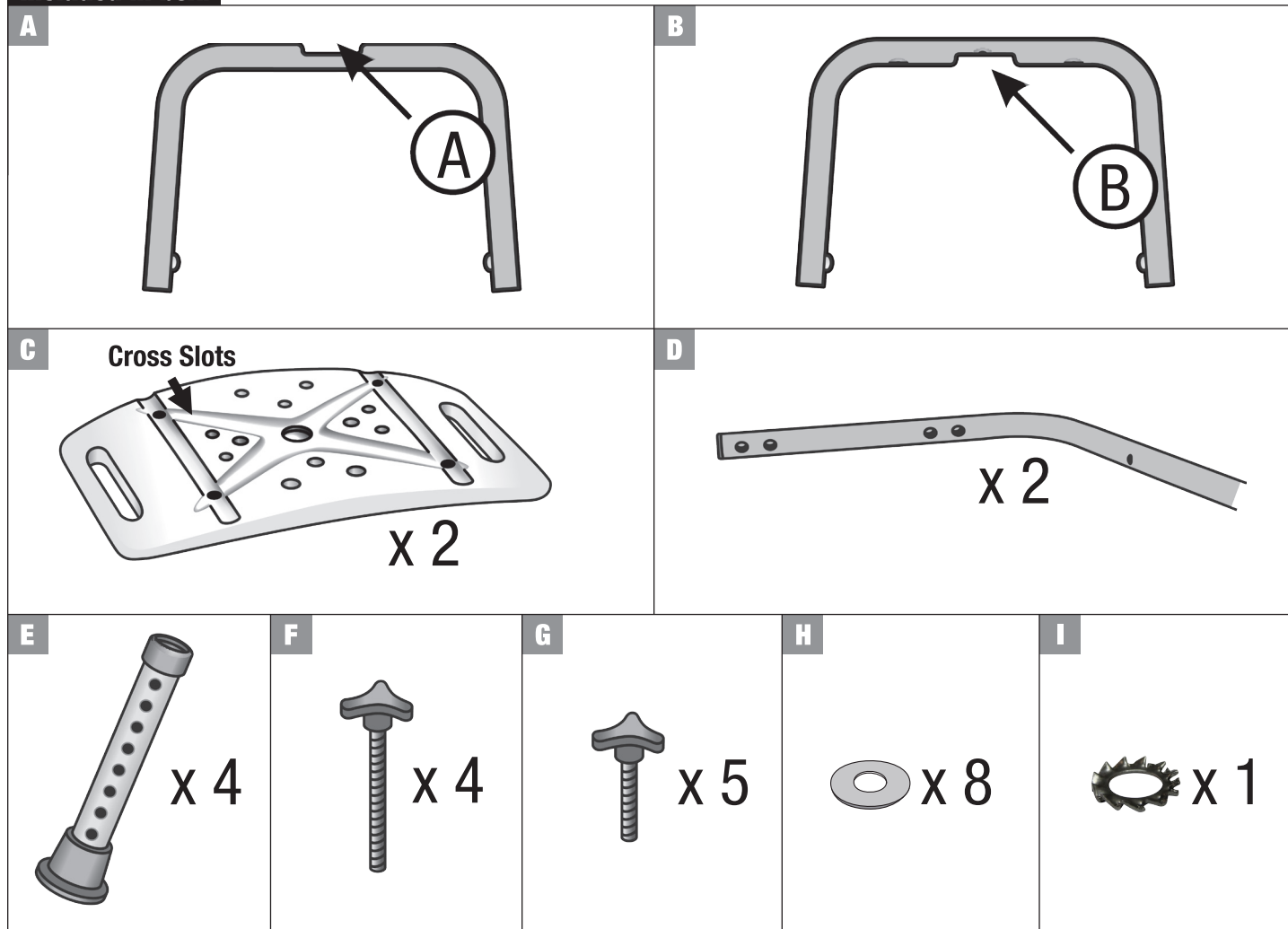




Included in box:



ATTENTION:

Please verify that all components are included as shown above, before proceeding with assembly.

DO NOT USE AS A VANITY STOOL

USER WEIGHT LIMIT: 300lbs.

WARNING:

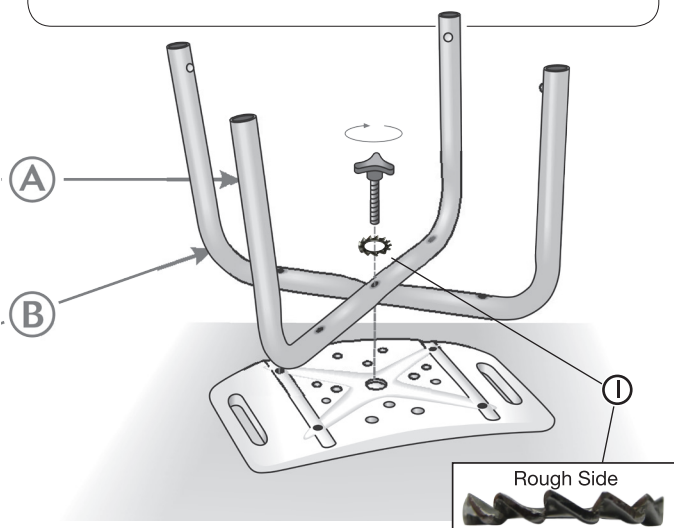
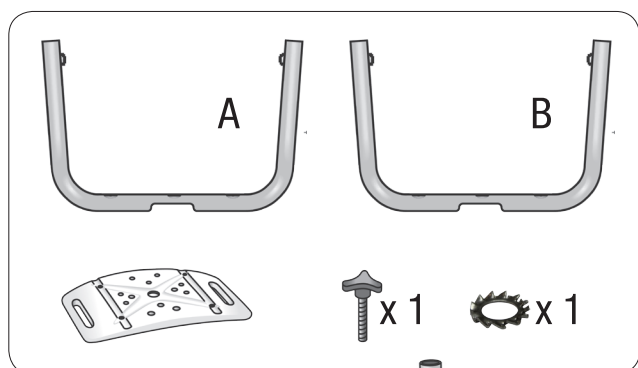
Before using, be sure that all gold locking buttons fully protrude thru holes of each Adjustable Leg.

Make sure all Adjustable Legs are snapped in the same hole position.

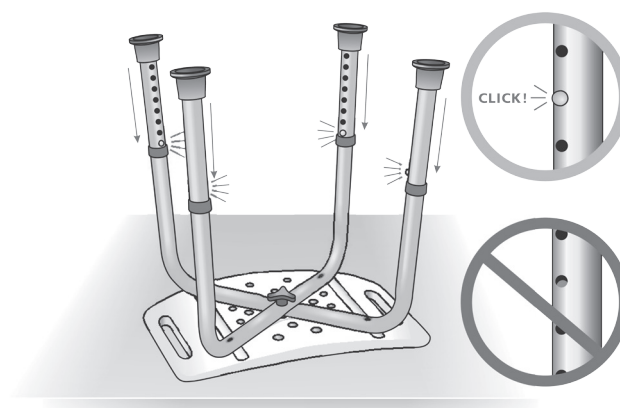
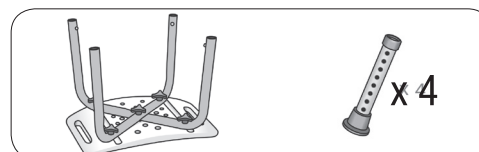
Verify that all legs are touching the floor and the bench is level and stable.

Periodically retighten all Nylock Fasteners.

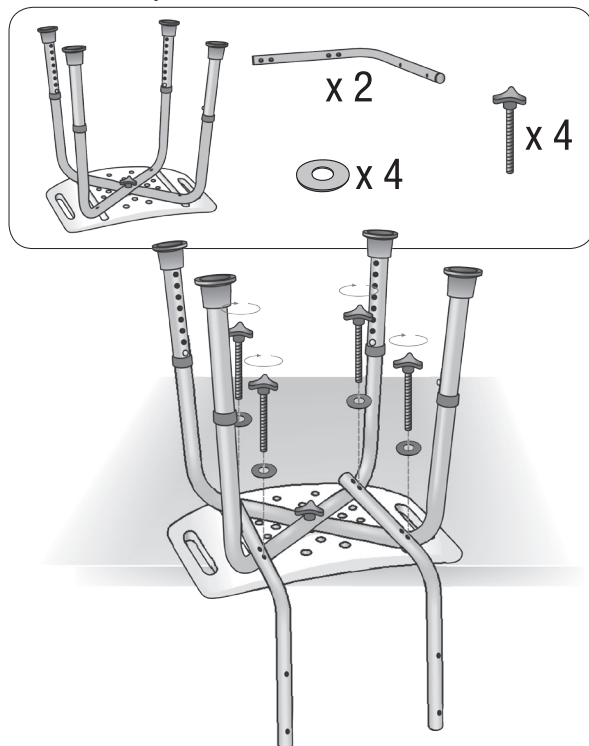
- 1** Place (B) into the cross slot marked “B” and hold in place on the bottom of the seat. Place (A) into the cross slot marked “A” and hold in place. Add Serrated Washer (I) and screw in Short Nylock Fastener (G) to center hole, do not fully tighten. When holding the Serrated Washer (I) you will notice one side is rougher than the other, the rough side should touch the Metal Tubing.



- 2** Slide Adjustable Legs (E) over the ends of the Bars (A & B). To set desired height push gold button on frame while simultaneously sliding Adjustable Legs (E) down the length of the Bars (A & B). Once you have reached your desired height the gold button should fully protrude through the hole. Repeat for all four Adjustable Legs (E).



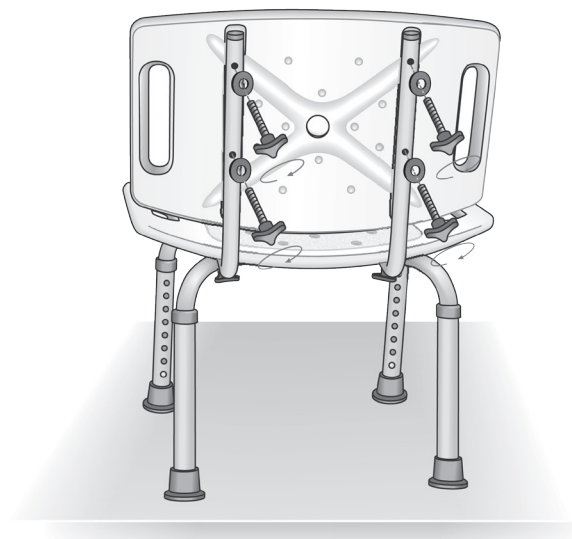
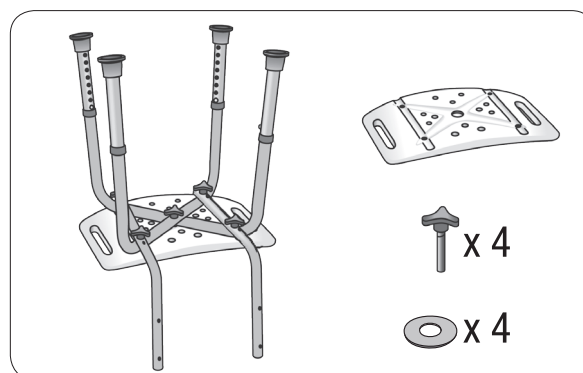
- 3** Place one of the L-Shaped Bars (D) on top of frame as shown in picture below, note the side of L-Shaped Bar (D) with four holes should be used. Secure and lightly tighten using Wave Washers (H) and Long Nylock Fasteners (F). Repeat for other side, once complete fully tighten all four Long Nylock Fasteners (F) and the Serrated Washer (G), so that they are fully seated. Please note that the back has two different depths, make sure that both sides are set for the same depth.



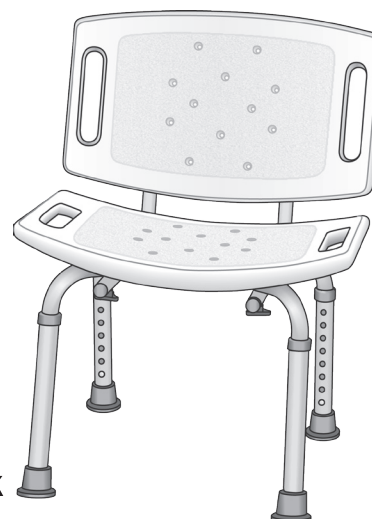
NOTE:

If you tighten each Nylock Fastener completely prior to inserting the next one, it may cause the holes to be out of alignment, making it difficult to insert and tighten the remaining Nylock Fasteners.

- 4** Turn the Bench over so that the Adjustable Legs (E) are now touching the floor. Attach Panel (C) using Wave Washers (H) and Short Nylock Fasteners (G), do not fully tighten. Once all Short Nylock Fasteners (G) are in place tighten so that they are fully seated.



**Completed B3003-S
Bath Bench with Back**



Essential Medical Supply, Inc. Limited Warranty

Essential Medical Supply, Inc. ("Essential") warrants its products free from defects in materials and workmanship ("Warranty") for a Limited Lifetime from the date of purchase ("Warranty Period"). The Warranty extends only to the original purchaser of Essential products. If within the Warranty Period there is a breach of Warranty as to an Essential product, such product shall be repaired or replaced at Essential's sole discretion. This Warranty does not include any labor or shipping costs incurred in replacement, part installation, or repair of any Essential product. ESSENTIAL'S SOLE OBLIGATION AND YOUR EXCLUSIVE REMEDY UNDER THIS WARRANTY SHALL BE LIMITED TO REPAIR AND/OR REPLACEMENT OF THE DEFECTIVE ESSENTIAL PRODUCT.

For Warranty service, please contact the dealer from whom you purchased your Essential product. In the event you do not receive satisfactory Warranty service, please write Essential directly at:

Essential Medical Supply, Inc.
Customer Service Department
6420 Hazeltine National Drive
Orlando, FL 32822-5121

Please provide the dealer's name, address, and date of purchase, and indicate the nature of the problem and the Essential product serial number.

Upon receipt of written notification, Essential will issue a return authorization. The defective unit or parts must be returned to Essential for Warranty inspection using the serial number as identification within thirty (30) days of the date of return authorization. DO NOT return products to Essential without Essential's prior written consent. Cash on delivery shipments will be refused and shipping charges must be prepaid.

Limitations and Exclusions: The Warranty shall not apply to products if 1) the Essential serial number has been removed or defaced; 2) the product has been damaged by negligence, accident, improper operation, maintenance or storage; and/or 3) the product has been modified without Essential's express written consent or repaired by an unauthorized third-party ("Warranty Disqualifying Events"). The Warranty Disqualifying Events include but are not limited to the addition of unauthorized parts or attachments or damage caused by circumstances beyond Essential's control, the occurrence of which shall be determined exclusively by Essential. The Warranty also shall not apply to problems or defects arising from normal wear and tear on Essential products and parts, including but not limited to rubber tips and hand grips, and failure to adhere to user instructions and safety precautions.

THE WARRANTY STATED HEREIN IS THE SOLE AND EXCLUSIVE WARRANTY OFFERED BY ESSENTIAL. THERE ARE NO OTHER WARRANTIES RESPECTING ESSENTIAL'S PRODUCTS, EITHER EXPRESS OR IMPLIED, INCLUDING BUT NOT LIMITED TO ANY WARRANTY OF DESIGN, MERCHANTABILITY, OR FITNESS FOR A PARTICULAR PURPOSE, EVEN IF ESSENTIAL HAS BEEN INFORMED OF SUCH PURPOSE. NO AGENT OF ESSENTIAL IS AUTHORIZED TO ALTER OR EXCEED ESSENTIAL'S WARRANTY OBLIGATIONS AS SET FORTH HEREIN. ESSENTIAL SHALL NOT BE RESPONSIBLE FOR ANY INDIRECT, INCIDENTAL, SPECIAL, OR CONSEQUENTIAL DAMAGES ARISING OUT OF USE OF ESSENTIAL PRODUCTS.

Product Serial No. _____